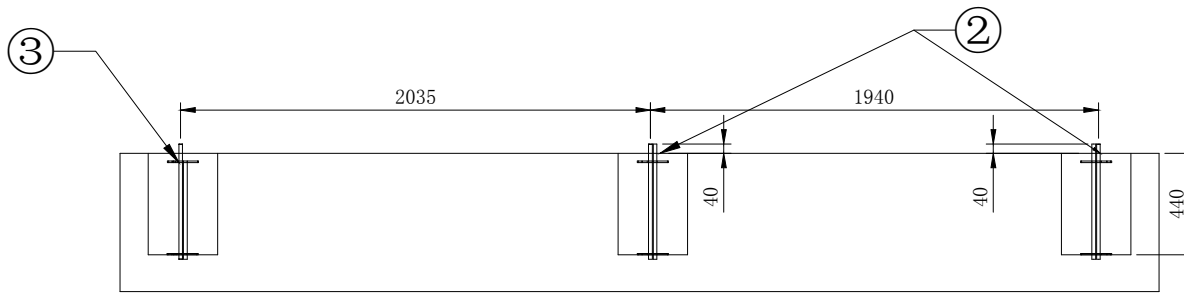


WYS1817-4m  
bus shelter Installation Manual

1. Select a flat surface for mounting the bus shelter main structure. Drill holes in mounting base in configuration shown as picture to accept bolts.
2. Hoist the back frame (Item 1) of bus shelter and secure screws onto bolts under the ground.
3. Put the solar panel frame (Item 2) on top and connect underneath solar panel cables together, in matching color.
4. Fix the two glasses (Item 3) on the sides and secure the screws using phillip screw driver.
5. Open maintenance door( Item 4) on the bench (Item 5), ensure all screws are fixed tightly and battery is turned on to complete installation.
6. Notice: the product is rather heavy, pls use lifting equipment safely to complete the installation

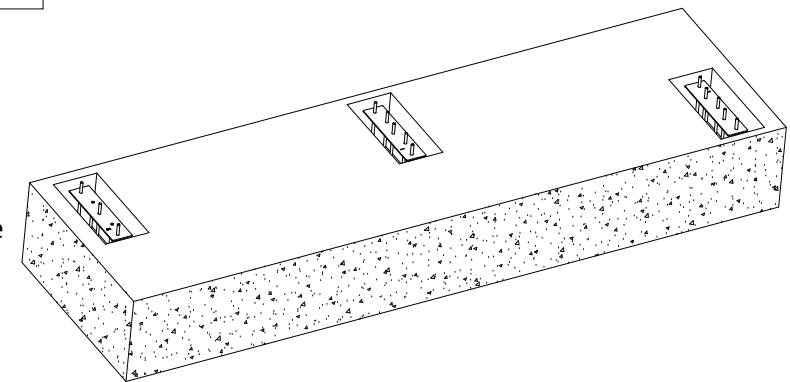
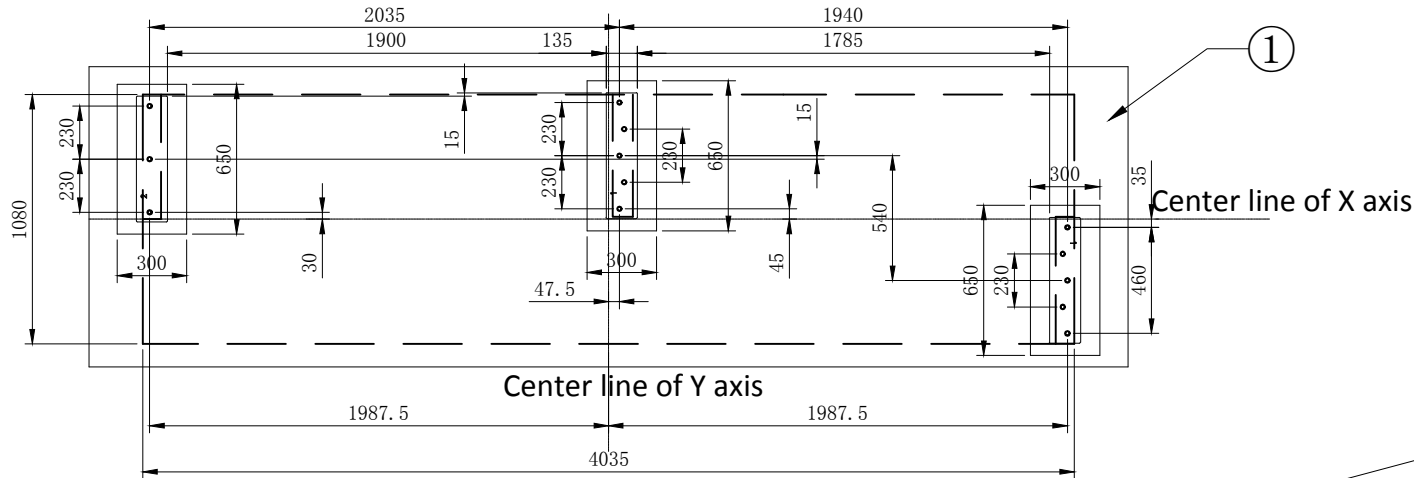
**ADLIS**  
**WEIYIN**

WYS1817-4M  
BUS SHELTER INSTALLATION MANUAL



**Dimension instruction**

- 1. Floor size: 4050mm\*1080mm
- 2. Bolt hole size: 650mm\*300mm\*depth440mm
- 4. Embedded concrete level above the ground: 40mm



**Mounting base Installation Step:**

1. Select a flat surface for mounting the bus station. Draw the layout of the bus station and bolt hole position on the mounting base (Item 1) in configuration shown as picture and take the center line of X / Y axis as the reference line.
2. Drill the three bolt holes in configuration shown as picture, level the bottom and make sure the depth is correct.
3. Configure anchor bolt (Item 2 and 3) into bolt holes, using bolt distance to Y axis as instructed to fix the position. Make sure all bolts shall be on the same level.
4. Fill bolt holes with concrete till same level as the ground, completed shown as the picture.
5. Install the bus station after 7 days when the concrete is completely dry.

**ASSEMBLY LIST**

PART	NAME	DIMENSION	QUANTITY
1	Mounting base		
3	Embedded bolt		3PCS

**ADLIS**  
**WEIYIN**

WYS1817-4M  
BUS SHELTER INSTALLATION MANUAL